

#### **PRODUCT DESCRIPTION**

The MexFil™ WMC200 UF075 ultrafiltration modules can be used for:

- Applications to treat ground and surface water, and for reuse of industrial or municipal wastewater effluents;
- The removal of particles, turbidity, TOC, bacteria, and viruses;
- Production of potable water and process water;
- Inside-out operation, typically in a semi dead-end filtration mode, cleaning regularly by a combination of forward flush and a backwash supported by a chemically enhanced backwash, providing perfect control of the membrane fouling rate;
- Vertical mounting inside a skid being plug-and-play compatible for the replacement of modules in existing installations.

The unique hollow fiber UF075 ultrafiltration membrane has an average pore size of less than 15 nm providing an improved fouling behaviour compared to existing ultrafiltration membranes.

#### **MEMBRANE SPECIFICATIONS**

Membrane material	Modified PES
Nominal MWCO*	75,000 Da
Membrane charge	Negative charge @ pH=7
Nominal fiber ID	0.8 mm

\* Molecular Weight Cut-Off (MWCO) is an estimation as it depends on size, shape, charge and polarity of the compound being tested as well as the test conditions.

#### **MODULE SPECIFICATIONS**

##### **Dimensions**

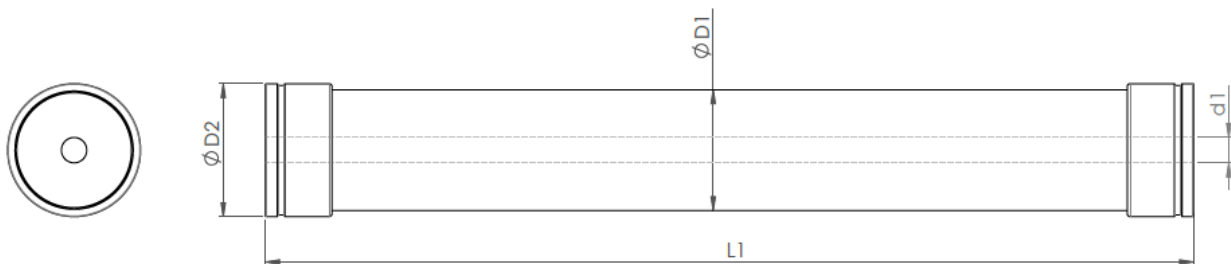
Length (L1)	1537 mm
Outer diameter housing (D1)	200 mm (8 inch)
Inner diameter permeate tube (d1)	42 mm
Nominal membrane area	43 m <sup>2</sup>

##### **Connections**

Type	8" grooved (standard; dedicated end caps available)
Outer diameter end cap connector (D2)	220 mm

##### **Materials of constructions**

Housing	PVC-U Cream
Internals	ABS/PP
Potting material	Epoxy resin



#### **PRODUCT CERTIFICATION**

According to NSF, KTW and Kiwa ATA regulations.