

PRODUCT DESCRIPTION

The MexFil™ WMC110 dNF80 nanofiltration modules can be used for:

- Applications to treat ground and surface water, and for reuse of industrial or municipal wastewater effluents;
- The removal of silica and organics (e.g. colour) producing potable water or process water;
- A wide range of process applications including caustic cleaning fluid recycling due to the excellent pH tolerance;
- Inside-out operation, typically in a crossflow filtration mode, cleaning regularly by a combination of forward flush, module feed-side drain and a backwash supported by a chemically enhanced forward flush, providing perfect control of the membrane fouling rate;
- Vertical mounting inside a skid being plug-and-play compatible for the replacement of modules in existing installations.

The unique hollow fiber nanofiltration modules replace the 2-step conventional treatment of a hollow fiber ultrafiltration module followed by a spiral wound nanofiltration or reverse osmosis module by one simple step.

MEMBRANE SPECIFICATIONS

Membrane material	Modified PES with a high chlorine tolerance
Nominal MWCO*	800 Da
Nominal membrane rejection for MgSO ₄ **	80%
Membrane charge	Negative charge @ pH=7
Nominal fiber ID	0.7 mm

* Molecular Weight Cut-Off (MWCO) is an estimation as it depends on size, shape, charge and polarity of the compound being tested as well as the test conditions.

** Test conditions: 600 mg/l MgSO₄, 2.5 bar, 25 °C, v=0.5 m/s.

MODULE SPECIFICATIONS

Dimensions

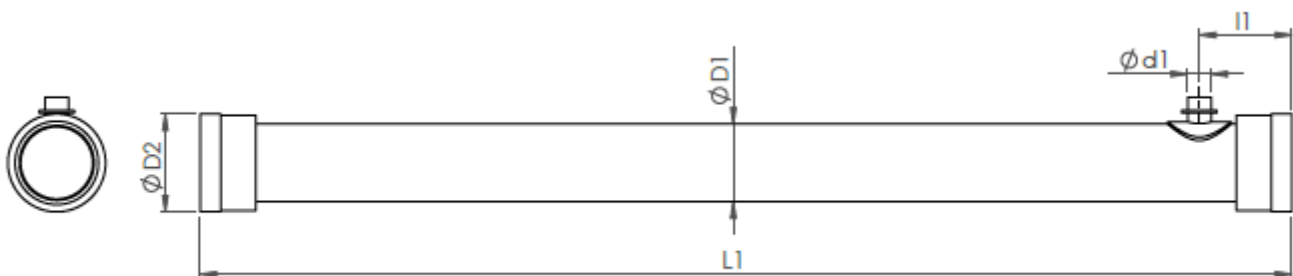
Length (L1)	1537 mm
Outer diameter housing (D1)	110 mm (5 inch)
Permeate connector (d1)	1.0" BSPP
Permeate connector position (l1)	131 mm
Nominal membrane area	14.0 m ²

Connections

Type	5.0" BSPP (standard 3-piece coupling)
Outer diameter end cap connector (D2)	163 mm

Materials of constructions

Housing	PVC-U Cream
Internals	PE netting
Potting material	Epoxy resin



PRODUCT CERTIFICATION

According to NSF, KTW and Kiwa ATA regulations.