

PRODUCT DESCRIPTION

The MexFil™ MP025 dNF80 or dNF40 nanofiltration modules can be used for:

- Applications to treat ground and surface water, and for reuse of industrial or municipal wastewater effluents;
- (dNF80) The removal of silica and organics (e.g. colour) producing potable water or process water;
- (dNF40) The removal of organics, many (micro)pollutants, softening in combination with partial desalination producing potable water or process water;
- A wide range of process applications including caustic cleaning fluid recycling due to the excellent pH tolerance;
- Inside-out operation, typically in a crossflow filtration mode, cleaning regularly by a combination of forward flush, module feed-side drain and a backwash supported by a chemically enhanced forward flush, providing perfect control of the membrane fouling rate.

These modules can be used in the NX Filtration MexPlorer Test Unit. A connector set can be provided to connect the modules.

MEMBRANE SPECIFICATIONS

Membrane material	Modified PES with a high chlorine tolerance
Nominal MWCO*	800 Da (dNF80) or 400 Da (dNF40)
Nominal membrane rejection for MgSO ₄ **	80% (dNF80) or 93% (dNF40)
Membrane charge	Negative charge @ pH=7
Nominal fiber ID	0.7 mm

* Molecular Weight Cut-Off (MWCO) is an estimation as it depends on size, shape, charge and polarity of the compound being tested as well as the test conditions.
 ** Test conditions: 600 mg/l MgSO₄, 2.5 bar, 25 °C, v=0.5 m/s.

MODULE SPECIFICATIONS

Dimensions

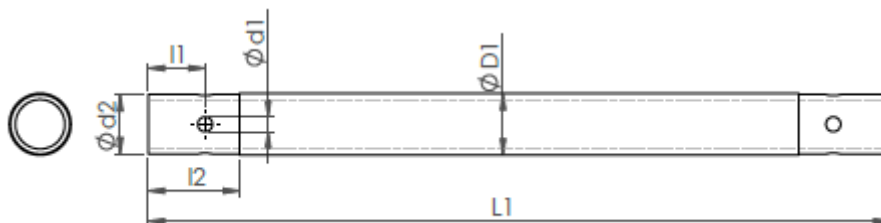
Length (L1)	300 mm
Outer diameter housing (D1)	25 mm (1 inch)
Permeate outlet diameter (d1)	6 mm (4 outlets each side)
Permeate connector position (l1)	23 mm
Nominal membrane area	0.065 m ²

Connections

Type	proprietary end cap available
Outer diameter end cap (d2)	24 mm
Length end cap (l2)	37 mm

Materials of constructions

Housing	PVC-U Transparant
Internals	PE netting
Potting material	Epoxy resin



PRODUCT CERTIFICATION

According to NSF, KTW and Kiwa ATA regulations.